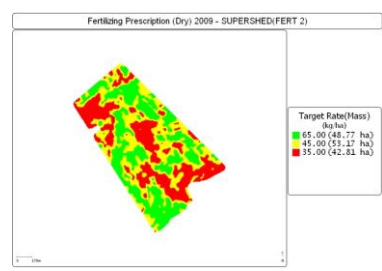
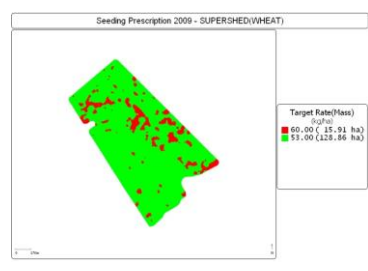
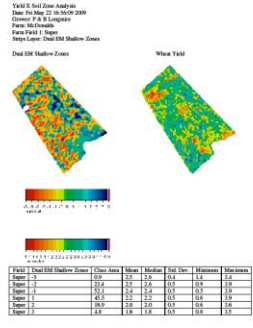
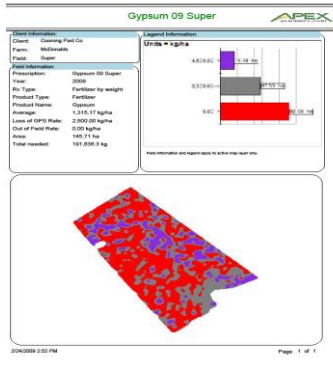


Coorong Pastoral Co Phil & Bindy Longmire



ESPERANCE WA

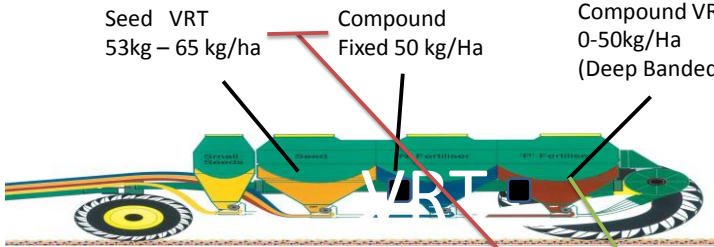
VRT GYPSUM & SEEDING





Seed VRT
53kg – 65 kg/ha

Compound
Fixed 50 kg/Ha

Compound VRT
0-50kg/Ha
(Deep Banded)



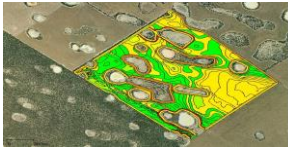
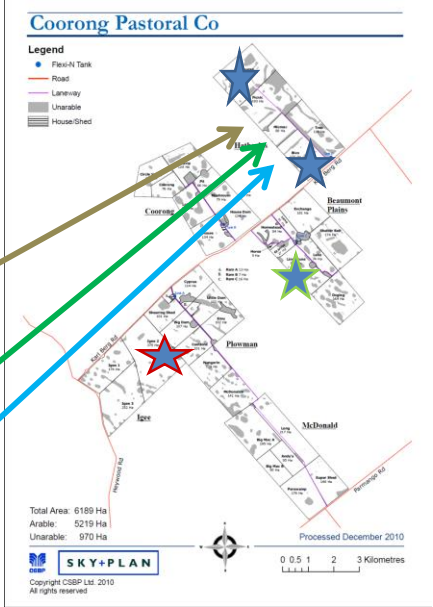
- ORGANISE PADDOCK FILES
- OWN KNOWLEDGE CAN CONFIRM OR QUERY DATA

- 100 %CONTINUOUS CROPPING
- PWCWB & FALLOW
- FOCUS ON MAXIMISING EFFICIENCY
- LABOUR & MACHINERY
- INPUTS & YIELD
- 3M TRAMLINES

2014

- ★•VRT GYPSUM
- ★•EM MAPPING
- ★•NEW VRT SEEDING MAPS
- ★•AMELIORATION OF SOILS
- ★•PADDOCK REALIGNMENT
- ★•DRAINAGE

Coorong Pastoral Co

Legend

- Flexi N Tank
- Road
- Lane/way
- Unarable
- House/Shed

Total Area: 6189 Ha
Arable: 5219 Ha
Unarable: 970 Ha

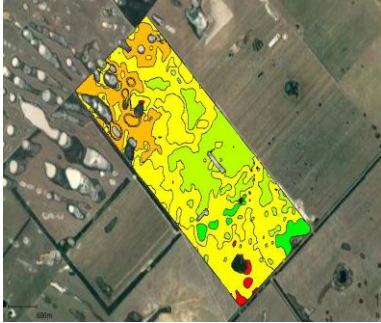
Processed December 2010

SKY+PLAN

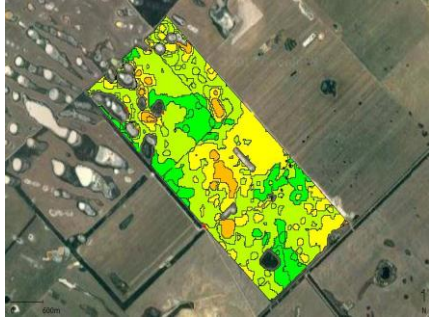
Copyright CSBP Ltd. 2010
All rights reserved.

0 0.5 1 2 3 Kilometres

EM & VRT FERT 2017



VRT GYPSUM
500 KG/HA – 3000 KG/HA
AVERAGE 1.95 T/HA



VRT FERT
75-100KG/HA AGSTAR X
91KG/HA VRT MAPPED
99.7 KG/HA ACTUAL
(INC OVERLAP 109%)

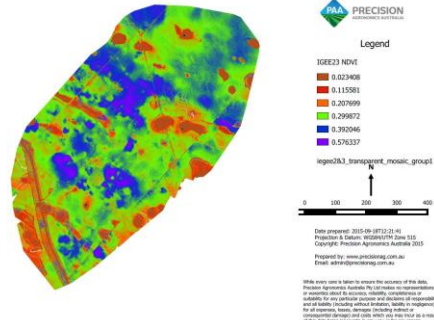
SEEDING 2017

Paddock	GPS HA	DATE SOWN	HA	% OVERLAP	TYPE	SEED VARIETY	RATE	FERT BIN1	FERT BIN2	FERT BIN3
IGEE 3	262.6	24-Apr	294.1	112.00	LUPINS	BARLOCK	120	10734	10735	
MCDONALDS	905.7	30-Apr	993	109.64	CANOLA	STINGRAY	2.7	48941	40084	
EXCHANGE	221	1-May	239.6	108.42	CANOLA	STINGRAY	2.7	11863	9237	
LIMESTONE	143.1	2-May	166.2	116.14	CANOLA	STINGRAY	2.7	20040	15605	
DOGLEG	166.7	3-May	201.8	121.06	CANOLA	STINGRAY	2.7	29993	23290	
HORSE	4.5	3-May	5.8	128.89	CANOLA	STINGRAY	2.7	280	261	
HOMESTEAD	82.2	4-May	92.3	112.29	CANOLA	STINGRAY	2.7	4556	3566	
GRANITE	26.2	4-May	30.6	116.79	CANOLA	STINGRAY	2.7	1510	1150	
SHELTERBELT	258	6-May	290.2	112.48	CANOLA	STINGRAY	2.7	14331	11693	
BACK	367.2	8-May	429.6	116.99	WHEAT	SCEPTRE	56	21205	15885	
BIG DAM	218.2	9-May	241.6	110.72	WHEAT	SCEPTRE	56	11965	9823	
CYPRUS	171.4	10-May	192.9	112.54	WHEAT	SCEPTRE	56	9532	7770	
EMU	166.2	13-May	186.8	112.39	WHEAT	SCEPTRE	56	9219	7217	
HOUSE	131.7	15-May	153.6	116.63	WHEAT	SCEPTRE	56	7559	5958	
LAKES	106	16-May	127.7	120.47	WHEAT	MACE	56	6299	4141	
CIRC VAL	197.6	17-May	227.3	115.03	WHEAT	MACE	56	11246	8562	
PIT(W)		19-May			WHEAT	MACE	56			
PIT(B)	406	19-May	441.3	108.69	BARLEY	LA TROBE	53	22770	17801	
GOLF COURSE	240.49	21-May	271.9	113.06	BARLEY	LA TROBE	53	13460	9461	
PICNIC	178.8	22-May	201	112.42	BARLEY	LA TROBE	53	9946	6987	
BIVD	251.29	23-May	276.9	110.19	BARLEY	LA TROBE	53	13685	9073	
TREE	163.29	23-May	191	116.97	BARLEY	LA TROBE	53	9443	6948	
IGEE 2	367.8	25-May	397.7	108.13	PEAS	GUNYA	120	9777	9778	
IGEE 1	173.9	26-May	207.3	119.21	PEAS	GUNYA	120	5104	5105	
OVERLAP				114 %						
ACTUAL RATE	106 KG/HA		94 KG/HA							
									AGSTAR X	
									TOTAL PURCHASE	
									465000 KG	

27800 LITRES OVERLAP FLEXI N
28 TONNES OVERLAP AGSTAR X

THE PATH

1. DEEP RIPPING WITH DELVING PLATES 400MM
2. DEEP CORING
3. EM
4. 80% RULE
5. DRONE IMAGE- POTASH
6. DEEP DELVING 10%
7. VRT POTASH AND SEEDING



THE NEXT STEP

- VRT SPLIT NITROGEN SENSORS
- AUTONOMOUS
- PROTEIN ANALYSER CHASER BIN

